



ABOUT US

We, **NATCO Middle East**, is one of the most active Freight Forwarders in the Kingdom of Saudi Arabia and United Arab Emirates. Ever since our opening in 2002 we never looked back.

Having our head office in Dubai, United Arab Emirates we are also having our offices in Jeddah, Dammam and Riyadh in the Kingdom of Saudi Arabia.

Our business areas are but not limited to

- ❖ Ocean Freight
- ❖ Air Freight
- ❖ Land Transportation
- ❖ Custom Clearance
- ❖ Warehousing / Distribution
- ❖ Projects

NATCO Middle East is a visualization of world-class freight forwarding company which aims of providing high quality handling and shipping services. We are dedicated to providing the best customer services with the help of a highly qualified and experienced team. Our mission is to be a true partner with our clients and always deliver the most effective and efficient solutions, includes offering point-to-point logistics solution in global partner network; providing quality services in terms of speed and accuracy to reduce costs and increase efficiency; and gaining customer and business partner's satisfaction.



We see ourselves as the one-stop solution for our customers. We provide services for small and medium-sized companies as well as for global conglomerates. Our focus has been to understand the basic needs of our clients and to meet those needs through a range of unique, customized and innovative services.

Our freight specialists can provide flexible solutions customized to meet your requirements which include

- Reefer/Perishables
- Oil and energy
- AOG (Air Craft On Ground)
- Cross Trade
- Warehousing
- Automotive
- Customs clearance/brokerage
- Full Container Loaded (FCL): 20', 40', 40'HC
- Less Container Loaded (LCL) with Consolidation System
- Land transport (trailer truck delivery of container)
- Break bulk cargo

NATCO **MIDDLE-EAST**

Our guiding principles include:

- Profitable niche market leadership
- Long-term customer relationships
- Targeted and continuous improvement
- Focus on individual worth and accountability

NATCO Middle East provides complete logistics solutions from under one roof.





CORE TEAM

**IBRAHIM MOHAMMED AHMED AL
BADAWI
(President)**

**SYED ABBAS ALI
(Managing Director)**

**SYED ANSER AHMED
(Director)**

**SABA KAUSER
(Director)**

**MOHAMMED IRSHAD
HUSSAIN
(Regional Manager)**

**C.A JOSEPH
(Finance Manager)**

**Mohd Idrees Hamed
(Exports Manager – Western
Province)**

**JOMY ANTONY
(Imports Manager – Western
Province)**

OUR OFFICES

NATCO Middle East Shipping & Logistic LLC, Dubai, UAE.

Address:

Suite No. 2046, Air Cargo Terminal,
Dubai Cargo Village,
P.O. Box: 231841, Dubai, UAE.
Telephone: 00-971-4-286 8264
Fax: 00-971-1-4-2868265

Jeddah Office

Address:

Suite No. 309, 3rd Floor, Tower
Building, Medina Road, P.O. Box:
54727, Jeddah-21524.
Telephone: 00-966-(0)12-652 5956
Fax: 00-966-(0)12-652 1823

Dammam Office

Address:

Suite No. 206, 2nd Floor, Al-Jomaih
Tower, King Khaled Street,
P.O. Box: 12049, Dammam-31437
Telephone: 00-966-(0)13-834 0416
Fax: 00-966-(0)13-834 0503

Riyadh Office

Address:

Suite No. 3, Ground Floor,
Siteen Street,
Al Malaz Riyadh -11411
Telephone: 00-966-(0)11-419 1633
Fax: 00-966-(0)11-419 1236

CUSTOM CLEARANCE

NATCO Middle East provides trustworthy and expert customs clearance services at both airports and seaports. Our in-house brokers and professional staff provide customers with complete and valuable customs information which helps them save on time and costs.

Our wide range of customs clearance services include:

- Ensuring that the cargo is approved by the regulatory authorities
- Offering customs advice on all the modes of freight forwarding including land, sea and air
- Arranging storage facilities during the clearance stage
- Coordinating between warehouse statutory authorities and shipping lines
- Speedy transaction of all customs formalities
- Providing the client with all the necessary certificates and documentation



AIR FREIGHT

At NATCO, we provide professional and reliable international air freight import and export services from origins around the world to our customers safely and on time. Punctuality and reliability are a huge part of our services. Customers can rest easy in the knowledge that their cargo will be transported to their desired destinations in the condition they were picked up from the origin. NATCO network offers competitive air freight rates, along with air import, export, and customs brokerage services that you can count on for reliable and innovative solutions to get your goods to or from nearly any destination worldwide.

Import by Air:

Our dedicated and experienced team of air import specialists provide you with the best routes at the best rates. Goods can be passed through customs within a few hours of their arrival, and delivered the same day. Our 24-hour customer help executives also provide assistance and advice related to urgent shipments that arrive after office hours.

Export by Air:

NATCO provides you with the easiest and best export services. We specialize in moving cargo of all weights, shapes and sizes. We also provide end-to-end monitoring of your shipments.



SEA FREIGHT

We provide a wide range of ocean freight forwarding services to almost all international locations. We have no restrictions on the size and weight of your shipments. In fact we offer customized solutions to meet your needs.

For both LCL and FCL Ocean freight consignments, we provide world-wide services at extremely competitive rates. We also offer LCL consignment consolidations in order to meet your requirements.

Ocean freight consignments are booked as per the customer's export instructions and vessel details. Estimated sailing and arrival times are notified to the customer via telephone, fax or email. Once the container has been stuffed, a status report is sent out. The sailing information is also passed on to the customer in a similar fashion.

In addition to providing freight transportation and issuing a bill of lading, we also maintain a list of articles for cargo containers. Our representatives stay close to your shipment from pick-up to delivery, keeping you closely informed of its progress. We also provide you with advice and technical assistance in order to ensure safe delivery of the cargo.



WAREHOUSE / DISTRIBUTION

NATCO Middle East offers warehousing and distribution services throughout the kingdom. In fact, our warehouses are located very close to the seaport which has proven to be an enormous advantage to our clients.

Our warehouses cater to customer requirements. We have storage facilities for seasonal products, sophisticated goods, fragile goods and more. All our warehouses contain temperature controlled spaces, racked spaces and open spaces with excellent facilities. Whatever your needs are, we have the perfect solutions.

Listed below are the storage and distribution services that we offer:

- De-consolidation of cargo
- Packing and Crating
- Stuffing and de-stuffing of containers
- Inventory control
- Order Processing
- Picking up and packing orders
- Distribution at destinations
- Short-term storage, long-term storage, block storage
- Secure and temperature-controlled facilities



Indoor Storage
Jeddah : 15,000 SQM
Dammam: 8,000 SQM

NATCO **MIDDLE-EAST**

Our Warehouse Service best suit for the following business firms who are :

- looking for sophisticated temperature controlled storage area.
- looking for secured storage of high-value products with skilled labor and adequate equipments.
- Planning for expansion OR launching a new product without huge investments.
- with overflow of storing capacity.
- Planning to enter into the market on testing basis.
- Looking for professional trained manpower to handle all types of storage
- Fully Equipped warehouse.

With Temperature Controlled, Dry, Racked Space and Open Floor Space we are equipped to handle wide variety of Products.



Outdoor Storage space

Jeddah: 20,000 SQM

Dammam: 5,000 SQM

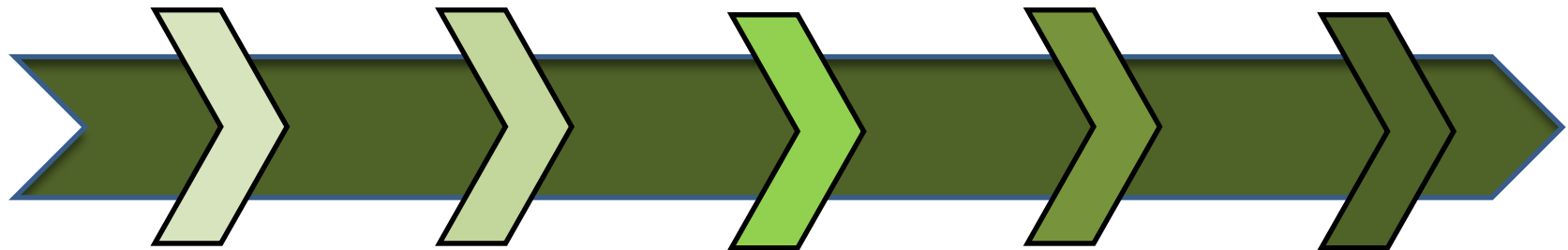
PROJECTS

NATCO Middle East's Projects and Logistics Division utilizes a total transportation concept that coordinates and monitors projects from the drawing board through completion. We assist our clients with every phase of heavy lift and turnkey projects from door to job-site, including planning and consultation, heavy-lift operations, sourcing, consolidations, warehousing, full and part charters, insurance, export packing, custom clearance and documentation – all solidified by our team of truly dedicated professionals. To give a brief idea of our project related activities, a list of some of the projects that we have handled in the Kingdom of Saudi Arabia and United Arab Emirates is given hereunder related to Heavy-lifts movements, Over-Dimensional materials and volume shipments related to SEA Charters, SEA Exports/Imports, Direct Deliveries from the vessel, Land Transportation and Jacking / Skidding on Foundations when required.

We are very actively involved in the door-to-door shipments of Gas Turbines, Transformers, Generators, Military Equipment, Cranes, Heavy-lifts and Over-dimensional cargo plus Food & Perishables, Pharmaceuticals etc., as well as general cargo containerized as well as LCL or break-bulk.

We have excellent relations with almost all Heavy-Lift Operators in the Kingdom of Saudi Arabia and United Arab Emirates and the volume of business that we generate for them earns us exclusive services with attractive rates.

MAJOR PROJECTS HANDLED BY US IN LAST 5 YEARS



2015

96 – Transformers
8 - Shunt Reactor
2 - Rotors

2016

109 - Transformers
6 - Shunt Reactor
3 - Rotors

2017

84– Transformers
3 - Shunt Reactor
2 - Rotors

2018

75– Transformers
11 - Shunt Reactor
2 - Rotors
20 - Metro Rail Cars

2019

87– Transformers
10 - Shunt Reactor
80 - Metro Rail Cars

RIYADH METRO PROJECT SIEMENS AG

We are currently involved in Riyadh Metro Project and in the process of delivering 250 plus Metro Cars units on door-to-door basis from Europe to Saudi Arabia on behalf of Siemens AG, Germany.



RIYADH METRO PROJECT SIEMENS AG

Six Metro Cars units are already delivered to Metro Riyadh Depot and 246 more units are scheduled to be completed by March 2020. Metro Cars are being loaded from Bremerhaven Seaport, Germany up to Dammam Seaport and Transported on Hydraulic trailers from Dammam Seaport up to Metro Riyadh Depot. We are also arranging loading of the Metro Cars on Trailers from Mafi and offloading of the cars at the depot.



RIYADH METRO PROJECT

2016 – 2020 On-going project.

Natco Middle East is involved in the Riyadh Metro Project from the beginning i.e. from 2016.

We are involved in door-to-door shipments from Germany up to Riyadh, Documentation related to each and every shipment, Ocean Freight, Survey, Custom Clearance and Deliveries to all depots (East Depot, South Depot and North Depot).

Being already familiar with the work procedure related to this project and all job sites gives us an added advantage to organize and handle RMP O&M Warehousing and Distribution with expertise and efficiency.

We are also involved in the regular air freight shipments as well as export-re-import shipments by sea freight for Riyadh Metro.

We consider our company to be well suited to carry out the complete job performance related to this warehousing and distribution project.

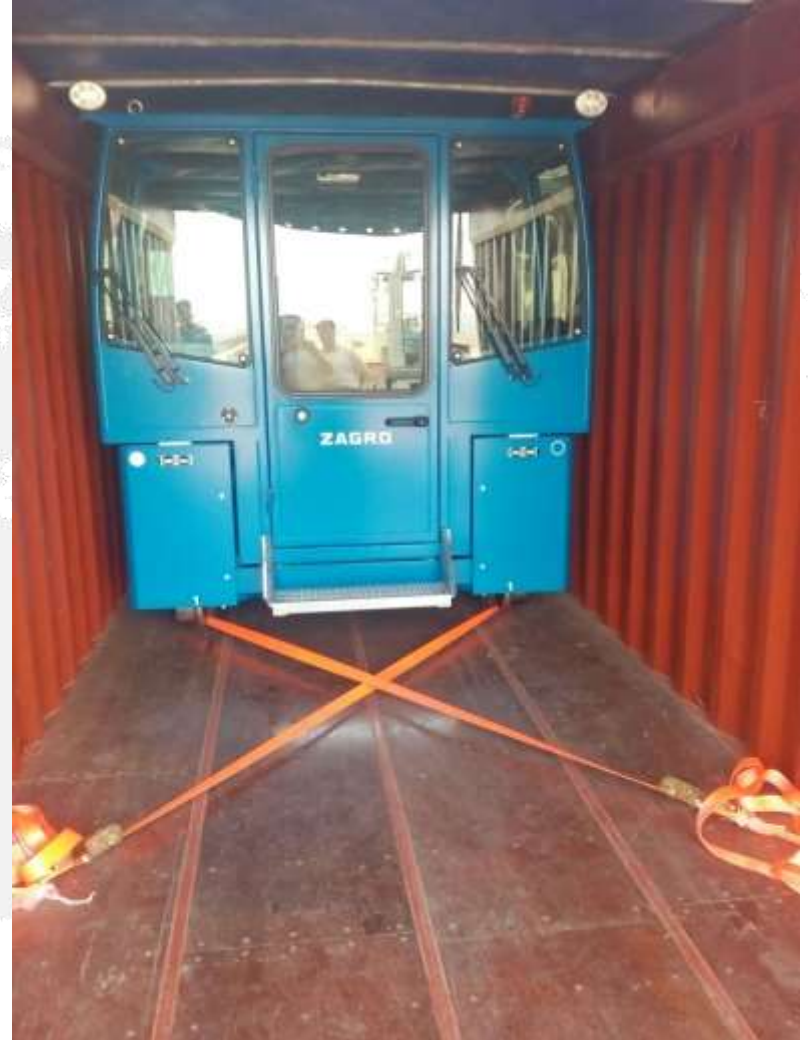


NATCO **MIDDLE-EAST**



RIYADH METRO PROJECT SIEMENS AG

Port Handling during the process of Custom Clearance arranged by NATCO Middle East.



RIYADH METRO PROJECT SIEMENS AG

Port Handling during the process of Custom Clearance arranged by NATCO Middle East.



GENERAL ELECTRIC GENERATORS (MARAFIQ PROJECT)

Jeddah Seaport on going Project on behalf of GE

9 Generators

Weight approximate 1,335 M Tons.



AIR CHARTER PROJECT

2019

Handled Air Charter Project from door Germany to door Saudi Arabia.

Two (2) Aircraft Charters from Cologne, Bonn Airport, Germany to King Abdulaziz International Airport (Jeddah Airport), Saudi Arabia. First Charter Aircraft with 1 x 97,800 kg Rotor having dimensions 1422cm x 378cm x 357 cm (Length x Width x Height) and Second Charter Aircraft with 3 x Wooden Boxes of Accessories (1 x 42,000 kg having dimensions 606cm x 365cm x 310cm, 1 x 34,500 kg having dimensions 606cm x 355cm x 240cm and 1 x 33,000 kg having dimensions 724cm x 265cm x 205cm) Length x Width x Height respectively.



Jeddah Operation

Off-loading of 1 x 97,800 kg Rotor from Chartered Aircraft at King Abdulaziz International Airport (Jeddah Airport) by a 400 ton Crane and loading the same on suitable Hydraulic Trailer. Transportation of Rotor from Jeddah Airport to Shuaibah Water & Electric Company of the Kingdom of Saudi Arabia in Shuaibah. Off-loading the Rotor from trailer on to the Foundation by 1 x 400 Ton Crane.



AIR CHARTER ROTOR

Air Charter of ANTONOV Aircraft

From Indonesia To Dammam Saudi Arabia

For a 70 Ton Equipment.



BULK TRANSFORMERS PROJECT

Transformers were custom cleared on direct delivery basis, transported to 47 different sites all over the Kingdom of Saudi Arabia.

Total Volume was more than 230 transformers with approximately 11,031 M tons



JEDDAH CENTRAL PROJECT TRANSFORMERS

4 x 502 MVA Transformers
3 x 57 MVA Transformers
1 x 40 MVAR Shunt Reactor

Weight : 1,780 M Tons

Jeddah Seaport on behalf of Siemens



JEDDAH CENTRAL PROJECT TRANSFORMERS

4 x 502 MVA Transformers
3 x 57 MVA Transformers
1 x 40 MVAR Shunt Reactor

Weight : 1,780 M Tons

Jeddah Seaport on behalf of Siemens



KHALIDIYAH MEDINA PROJECT

Custom Cleared on direct delivery basis, transported to Khalidiyah site and placed on foundation by Crane.



DAMMAM HAIL PROJECT TRANSFORMERS

Custom Cleared on direct delivery basis, transported to Hail site and placed on foundation by Jacking / Sliding method.



ISCOSA, HAIL-2 & 3 PROJECT TRANSFORMERS

Transportation of 15 Transformers and 5 shunt reactors from Jeddah seaport on direct delivery basis to Hail-2 and Hail-3 plus placing the same on foundations at site by jacking / sliding.





Supported ST Engineering during the Summer Trails of 8x8 armored vehicle in Saudi Arabia

NATCO Middle East supported ST Engineering Land Systems in conducting the summer trails in Saudi Arabia conducted under the patronage of the Royal Saudi Land Forces. We provided their team complete logistics support in Saudi Arabia right from the sea ports, airports, land transportation and customs formalities assistance. We covered more than 5900 kms within 15 days in different parts of Saudi Arabia by road.

We also provided with the following services during the trails:

- Provided vehicles (4x4) with trained drivers for off-road use
- Lowbeds for carrying equipment
- Bulldozer for recovery of the 8x8 armored vehicle with operator
- Forklift for support team with operator
- 24/7 Male medical nurse with AED and emergency medical kit
- Wireless communication devices with head phone and car charges
- Hotel accommodation in different cities of KSA wherever the trails took place
- Food and beverages for the whole team throughout the trail
- Mobile power supply for their equipment
- Air compressor for refilling air in the vehicle tires
- Refilling of fuel for the vehicles
- Multi linguistic Liaison officer to communicate in Arabic, English, Urdu between the RSLF, ST Engineering and the support team.

NATCO **MIDDLE-EAST**



PROJECTS

List of projects successfully handled by NATCO Middle East

S NO.	YEAR	PROJECT NAME	MATERIAL / COMMODITY	TOTAL FREIGHT	SPECIAL
1	2015-2017	Bulk Transformers Project	78 x Transformers	11,031,000 kg	Dammam and Jeddah seaports On-going project on behalf of Siemens
2	2016-2017	Marafiq Project	9 x Generators	1,335,348 kg	Jeddah seaport On-going project on behalf of GE (General Electric)
3	2017	ISCOSA Al-Khobar Project	1 x Rotor	82,191 kg	Dammam seaport On behalf of ISCOSA
4	2016	Hail-2 Project Saudi Electric Company	1 x Transformer	120,000 kg	Jeddah seaport On behalf of ISCOSA
5	2016	Hail Transformer Shifting project	1 x Transformer	350,000 kg	Road Transportation from Hail-1 to Hail-3
6	2016	Saudi Electric Company Hunayn Project	4 x 502 MVA Transformers 1 x 120 MVA Transformer 3 x 67.5 MVA Transformers	1,104,000 kg	Jeddah seaport On behalf of Siemens
7	2016	Saudi Electric Company Sharafiyah Project	1 x Transformer	76,000 kg	On behalf of Siemens
8	2015 - 2016	Hail and Al-Jouf Projects Saudi Electric Company	2 x Transformers each of 225.25 kg	450,000 kg	Jeddah seaport On behalf of Siemens
9	2015	Hail-3 Project Saudi Electric Company	6 x Transformers and 2 x Shunt Reactors	1,341,479 kg 294 packages	Jeddah seaport On behalf of Siemens

PROJECTS

List of projects successfully handled by NATCO Middle East

S NO.	YEAR	PROJECT NAME	MATERIAL / COMMODITY	TOTAL FREIGHT	SPECIAL
10	2015-2017	Haramain Railway Project	Railway Shipments	11,031,000 kg	On behalf of Siemens Rail Automation
11	2014	Al-Kharj-2 Project Saudi Electric Company	3 x 502 MVA Transformers plus 3 x 1000 MVA Transformers	1,227,609 kg 246 packages	Jeddah seaport On behalf of Siemens
12	2014	Al-Kharj-2 Project Saudi Electric Company	2 x 80 MVA Shunt Reactors 2 x Transformers	290,540 kg 74 packages 158,545 kg 49 packages	Jeddah seaport On behalf of Siemens
13	2014	Jeddah Central Project Saudi Electric Company	4 x 502 MVA Transformers 3 x 57 MVA Transformers 1 x 40 MVAR Shunt Reactor	1,780,120 kg 242 packages	Jeddah seaport On behalf of Siemens
14	2013-2014	Hail-2 Project Saudi Electric Project	3 x 502 MVA Transformers 3 x 60 MVA Transformers 3 x 60 MVAR Shunt Reactors	821,860 kg 136 packages	Jeddah seaport On behalf of Siemens
15	2013	Arar Power Project	Gas Turbine	81,000 kg 1 piece	Dammam On behalf of Siemens
16	2013	Sanabel Project	Cable Drums	985,992 kg 39 cable drums	Jeddah seaport On behalf of Siemens
17	2013	Makkah repair & return project	Transformer	275,000 kg	Road Transportation On behalf of Siemens
18	2013	ISCOSA Al-Khobar Project	Rotor	60,000 kg	Dammam seaport On behalf of ISCOSA

PROJECTS

List of projects successfully handled by NATCO Middle East

S NO.	YEAR	PROJECT NAME	MATERIAL / COMMODITY	TOTAL FREIGHT	SPECIAL
19	2012	Jizan University Project	Transformer	320,509 kg 67 packages	Jeddah seaport On behalf of Siemens
20	2012	SABIC Jubail Project	Motors	68,720 kg 3 packages	Dammam seaport On behalf of Siemens
21	2012	Saudi Electric Company. Sanabel Project	Cable Drums	1,778,928 kg 48 cable drums	Jeddah seaport On behalf of Siemens
22	2012	Sipchem Jubail Project	Transformer	106,800 kg 1 piece	Dammam seaport
23	2012	SABIC Jubail Hadeed Project	Transformer	154,831 kg 54 packages	Dammam seaport
24	2012	Saudi Electric Company Hiteen Project	4 x Transformers	624,000 kg 601.59 cbm	Dammam seaport
25	2012	Armored Vehicle Export Project	Military Equipment	6,300 kg	Jeddah seaport. Export to Spain
26	2012	Saudi Electric Project Qurayyat Project	3 x Transformers	363,468 kg 69 packages	Jeddah seaport
27	2012	Armored Vehicle Export project	Armored Truck / Gun Howitzer	25,000 kg 2 vehicles	Jeddah seaport Export of Spain
28	2011	Yanbu Royal Commission Project	2 x 256 ton Transformers 3 x 86 ton Transformers 2 x 45 ton Shunt Reactors	860,000 kg	Jeddah seaport

HELICOPTER PACKING PROJECT

2019

Successfully handled Air Charter Handling at King Abdul Aziz International Airport, Jeddah, Saudi Arabia.

91 Ton Turbine plus three (3) boxes of Accessories each weighing 42 Ton, 35 Ton and 33 Ton on behalf of Siemens (ISCOSA), Saudi Arabia.

Operation was done by 300 Ton Crane and suitable hydraulic trailers at Jeddah airport. After offloading from the Aircraft the whole shipment was transported to M/s. Shuaibah Water and Electricity Site in Shuaibah, Saudi Arabia and off-loaded on site.

It was a one week operation in total and successfully carried out by our team to the satisfaction of all concerned.

NATCO **MIDDLE-EAST**



YACHT

Direct delivery at Jeddah port and transportation to site within Jeddah city limits.



KEY CONTACTS

Jeddah Office

Syed Abbas Ali

(Managing Director - Middle East)

Email : abbas@natcosa.com & abbas@natco.ae

Mobile : +966-50 669 0886

Mohammed Irshad Hussain

(Regional Manager)

Email : irshad@natcosa.com

Mobile : +966-50 664 4276

Naveed Ali Khan

(Sales & Marketing Manager)

Email : naveed@natcosa.com

Mobile : +966-50 663 7239

Telephone : +966-2-652 5956 (Ext. 234)

Jomy Antony

(Import Manager)

Email : jomy@natcosa.com

Mobile : +966-55 490 0420

Telephone : +966-12-6525956 (Ext. 243)

Mohammed Idrees Hamed

(Manager Sea Exports)

Email : idrees@natcosa.com

Mobile : +966-50 664 4831

Telephone : +966-12-6525956 (Ext. 226)

C.A. Joseph

(Finance Manager)

Email : joseph@natcosa.com

Telephone : +966-12-652 5956 (Ext. 229)

Zaffar Ali Khan (Asst. Finance Manager)

Email : Zaffar@natcosa.com

Telephone : +966-12-6525956 (Ext. 230)

Mohammed Naveeduddin (Sea Export)

Email : Naveeduddin@natcosa.com

Mobile : +966-50 531 1425

Shahed Ali (Warehouse Operations)

Email : warehouse@natcosa.com

Mobile : +966-55 304 4121

Dammam:

Syed Anser Ahmed

(Director)

Email : rydanser@natcosa.com

Mobile : +966-50 365 0330

Junaid (International Sales)

Email : junaid@natcosa.com

Mobile : +966-54 157 3122

Salvador Gotingco (Operations)

Email : dmimport@natcosa.com

Telephone : +966-13-834 9972 (104)

Riyadh

Faisal Ahmed Mandi

(Business Development Head)

Email : faisal@natcosa.com

Mobile : +966-556 310 270

Fareed Sardar Khan (Riyadh Operations)

Email : fareedsk@natcosa.com

Mobile : +966-55 508 3409

Dubai (UAE)

Saba Kauser (Director – Dubai, UAE)

Email : saba@natco.ae

Mobile : +971-50-551 9166

Syed Sufiyan Abbas (International Sales)

Email : sufiyan@natcosa.com

Mobile : +966-54 077 2877

Syed Hamed Yamani (Operations)

Email : hamed@natco.ae

Mobile : +971-50 827 0047

Anita (Operations)

Email : natcoint@eim.ae

Telephone : +971-4-286 8264

Mohamed Hussain (Accountant)

Email : accounts@natco.ae

Telephone : +971-4-286 8264



THANK YOU FOR VIEWING THIS PRESENTATION

YOU CAN ALSO VISIT OUR WEBSITE

www.natcomiddle-east.com