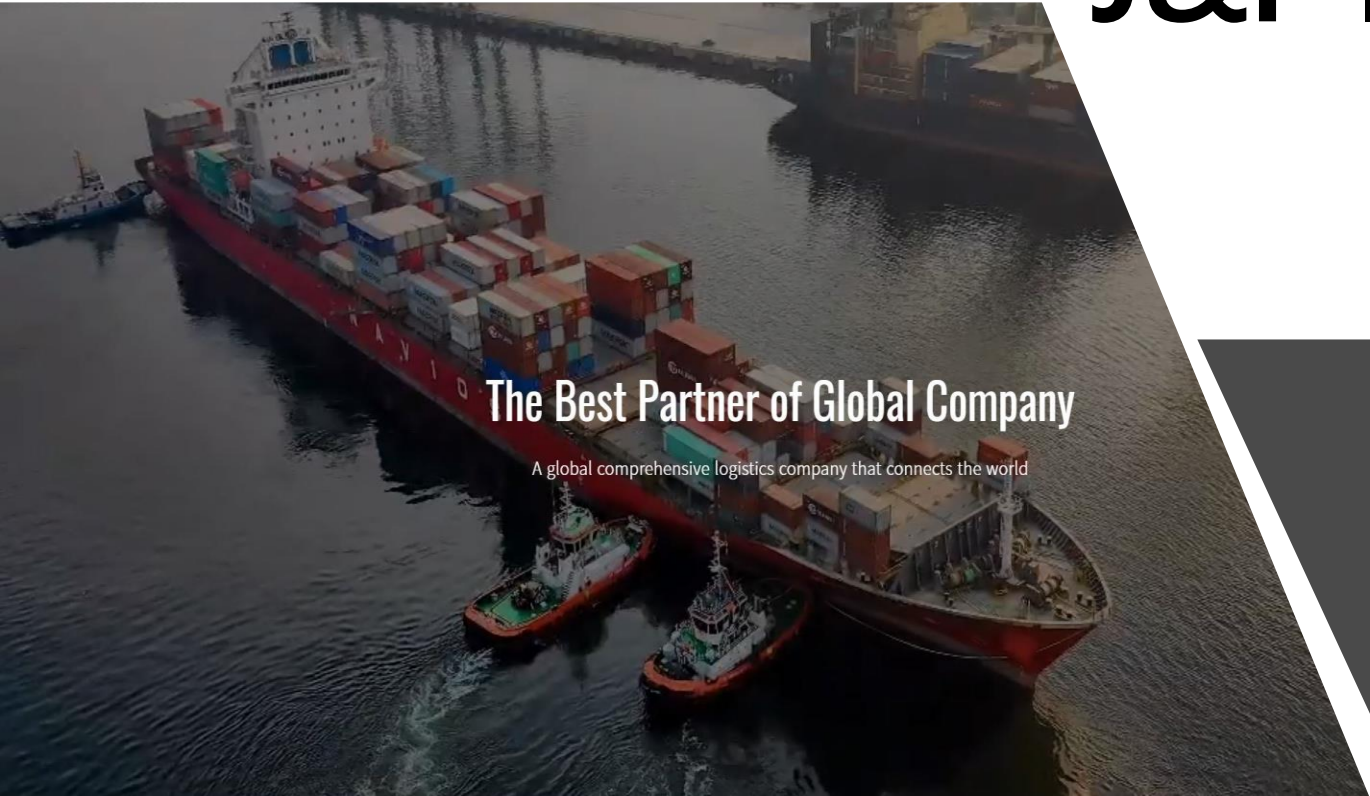




# J&F Integrated Logistics

We go together with you and your Journey

[www.jnflogix.com](http://www.jnflogix.com)

An aerial photograph of a large red container ship docked at a port. The ship is heavily loaded with colorful shipping containers. Several tugboats are positioned around the ship, assisting with its movement. The water is dark, and the port infrastructure is visible in the background.

**The Best Partner of Global Company**

A global comprehensive logistics company that connects the world

Date : 2020.09.25

- Jason Lee / CEO
- Let's devote ourselves to logistics for the success of our customers with a heart that is always grateful to our customers!.
- Let's provide customers with the best one-stop logistics as well as final consulting!.



# Company Profile

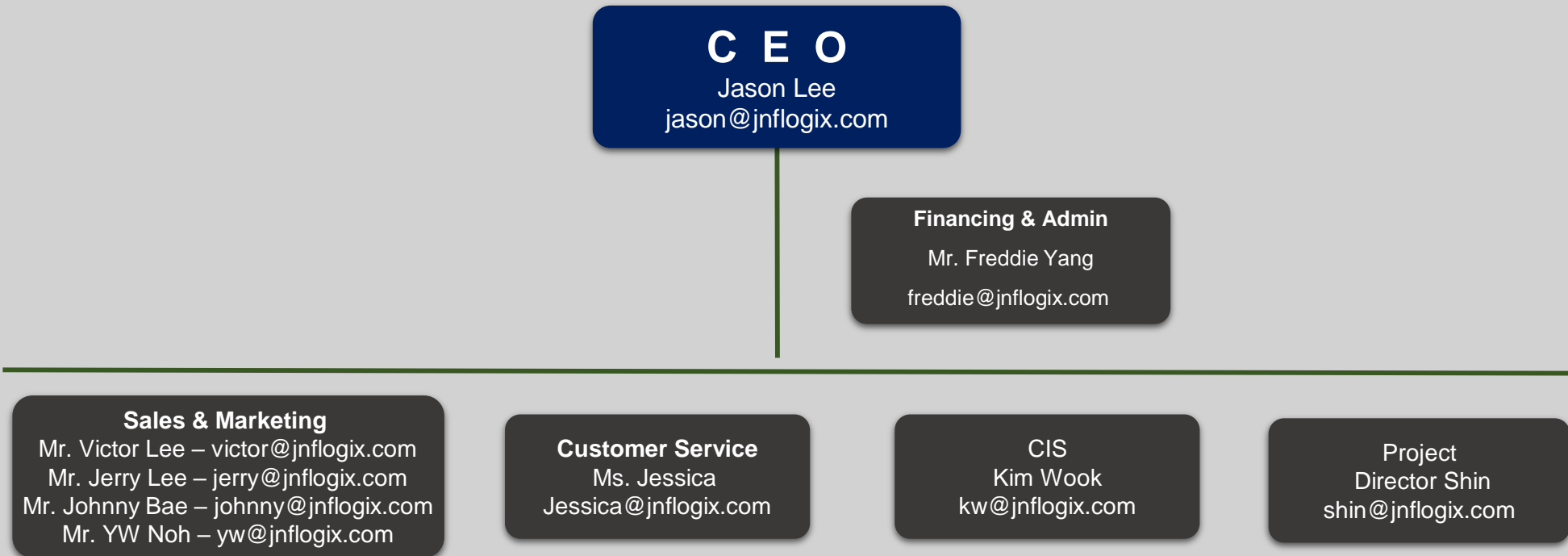
Location

COMPANY NAME	J&F Integrated Logistics
DATE OF ESTABLISHMENT	June 01, 2020
COMPANY FOUNDER	PRESIDENT & CEO : MR.Jaemoon Lee ( Jason Lee )
COMPANY ADDRESS	# 1029 Gong-zone, Bodeum-Ro 158, Seo-gu, Incheon, KOREA
COMPANAY EMPLOYEE	9 PERSONS
CONTACT POINT	TEL : 82-32-715-7926 FAX : 82-32-567-7925

J&F Integrated Logistics is providers for global transportation such as Break-Bulk, Heavy Vehicles, Car Transportation, Air Traffic, Sea Leg (Asia, USA, Europe, etc), Inter-modal Service (TSR-Trans Siberian Railway, TCR-Trans China Railway, and TMR-Trans Mongolian Railway).

With organic global partners and the professional know-how through long time experience for international transportation, J&F Integrated Logistics is surely prepared to service all of your needs.

# Organization Chart



# Service Scope

Purchase Order Management

International Transportation

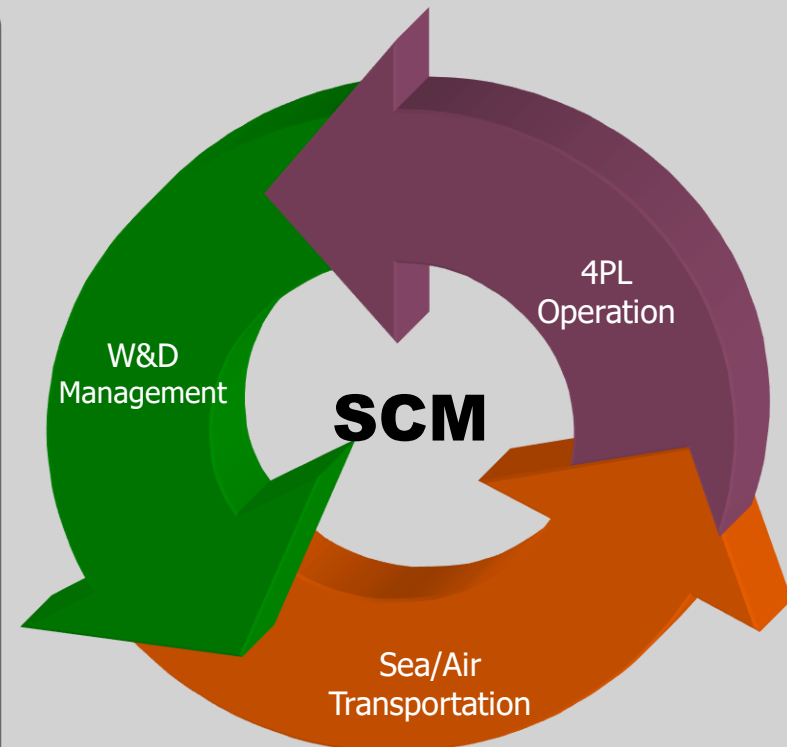
Warehousing and Distribution

Domestic Inland Transportation

Cargo Flow Visibility Solution

4<sup>th</sup> Party Logistics Management

Logistics Consulting & Contract



# Service Coverage

- Integrated Logistic Service with worldwide coverage
- Intermodal Service (ALB, TSR, TCR, TMR, TMGR)

## Service Model



Ocean



Air



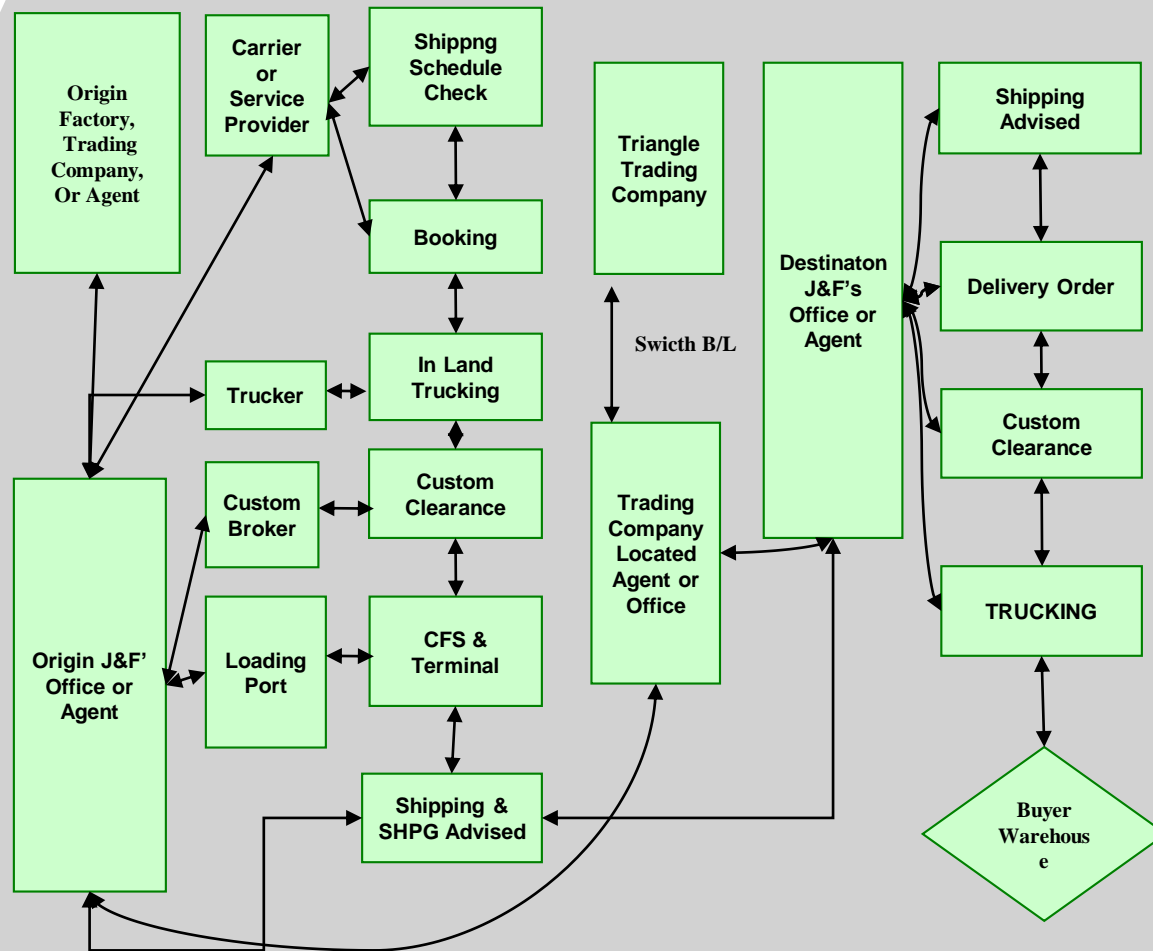
Rail / Truck  
Intermodal



Warehouse



# Freight Forwarding Service



- 1) Informing sailing schedule to customer
- 2) Delivery co-ordination and follow up with customer prior to closing time
- 3) Booking of space and equipment with carriers
- 4) Arrange drayage of container for loading
- 5) Preparation of shipping advice, B/L and forwarding to customer
- 6) Co-ordinate with customer on all logistics issues
- 7) Arrival Notice to consignee at destination
- 8) Arranging feeder vessel and pre-alert to appropriate parties
- 9) Smooth delivery of cargoes to consignee
- 10) Timely cargo tracing and delivery information

# Service for Europe and CIS

◆ **Multi-modal Service through Deep Sea Route**

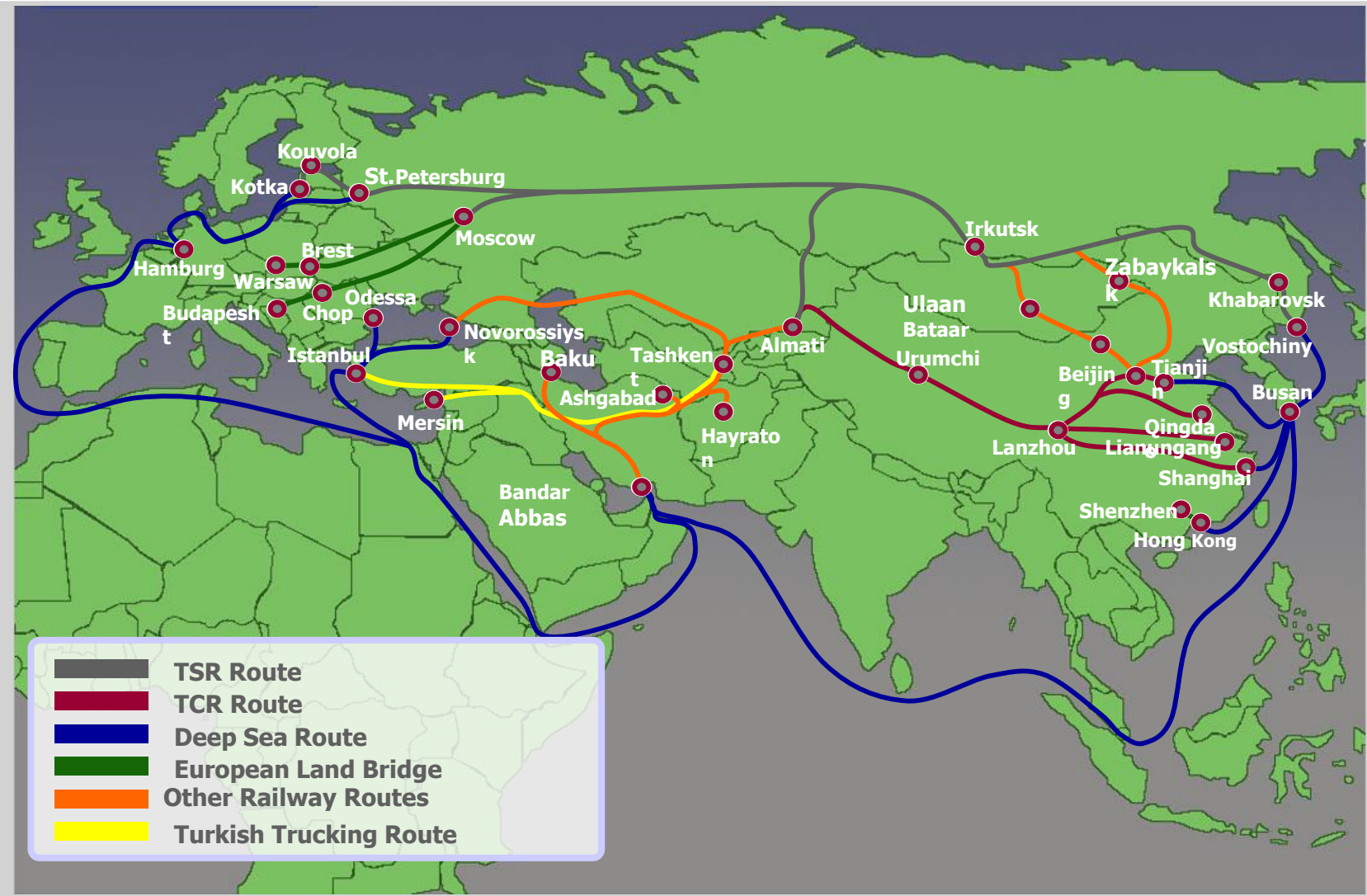
◆ **TSR/TCR/TMR/TMGR Intermodal Service in Russia and CIS region**

*J&F Integrated Logistics provides our customers with a variety of services that combine resources from all areas of the industry*

*Connecting vessel, rail, truck, air and warehousing; together forming a worldwide supply chain solution.*

*Let out intermodal services teams help your company be more productive, efficient and competitive.*

*We specialize into Russia, CIS and Eastern Europe.*





# Integrated Logistics

## ■ *W & D Service*

- *Loading / Unloading Service ; Inspection, Serial No. Capture, RFID*
- *Storage Service ; SKU, Palletized, Bulk,*
- *Pick & Pack Service ; Re-Packing, Labeling*
- *FIFO Management*
- *Delivery Service*
- *Return Good Management*
- *Real-time inventory/ loading / unloading status monitoring via web base*
- *Transloading Service*

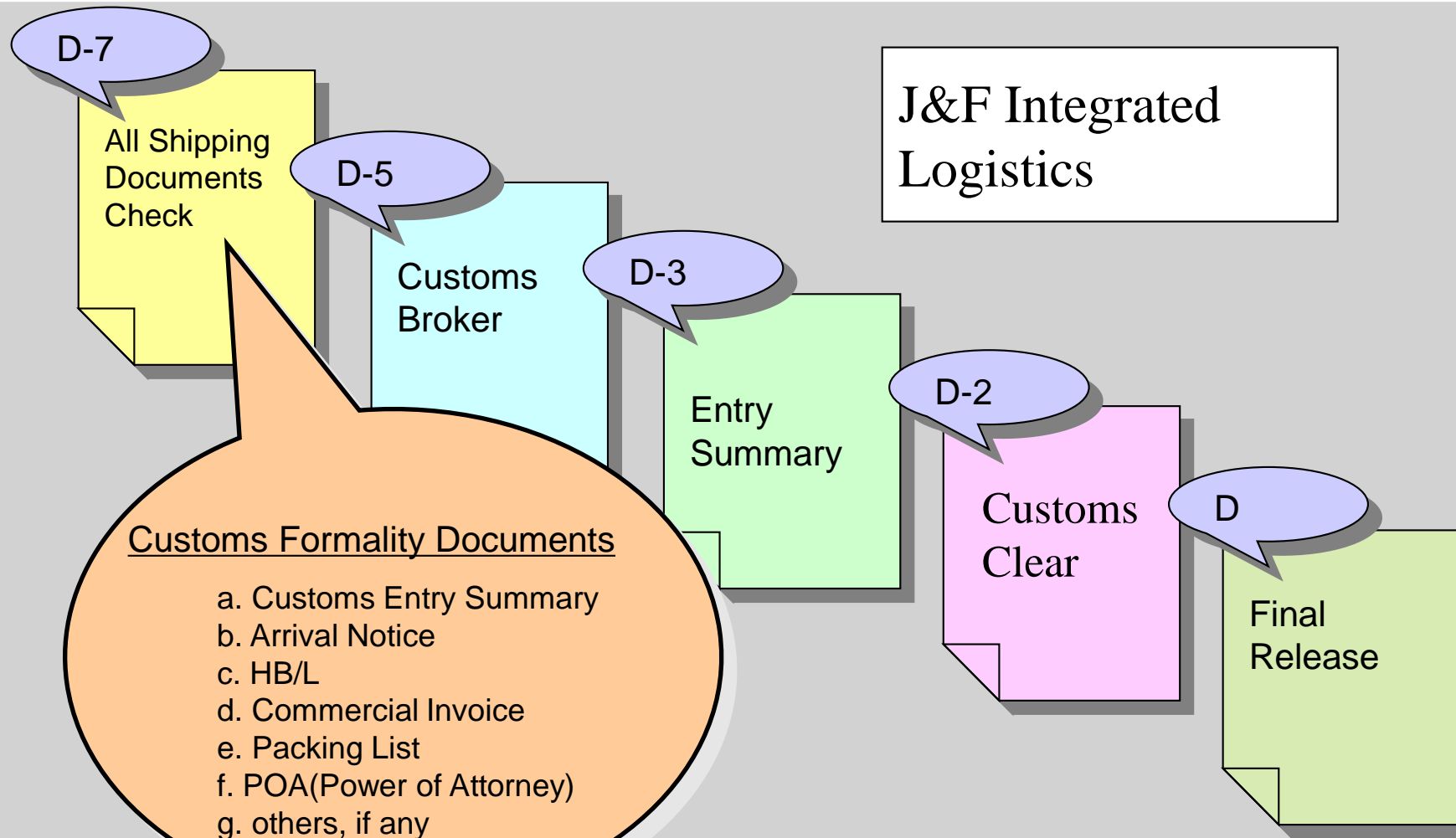
## ■ *Road transportation*

- *Maintain optimum delivery cost with centralized order management system*
- *Settle optimum delivery service channel with analyzing volume by customers including specific requirement and grouping route*
- *Support distribution channel changes without any issue and Bring Customer's Sales increase*
- *Help to get confidence from dealer/distributor and end- user by leading changes and maintain strong relationship*

## ■ *Customs Clearance Brokerage Service*

- *T & E / IT issue service ; In – Bond drayage*
- *Vehicle export validation service*
- *Preliminary Declaration Procedure which saves Time and Money*
- *EDI Custom Clearance Capability and Real Time visibility thorough strong IT capability*

# Custom brokerage Service





# Thanks



**J&F Integrated Logistics Co., Ltd.**

Jason Lee / CEO

A #1029 Gong-zone, Bodeum-ro 158 Seo-gu, Incheon 22664, Korea

T 82-32-715-7926 F 82-32-567-7925

M 82-10-2814-0551

E [jason@jnflogix.com](mailto:jason@jnflogix.com)

H [www.jnflogix.com](http://www.jnflogix.com)

